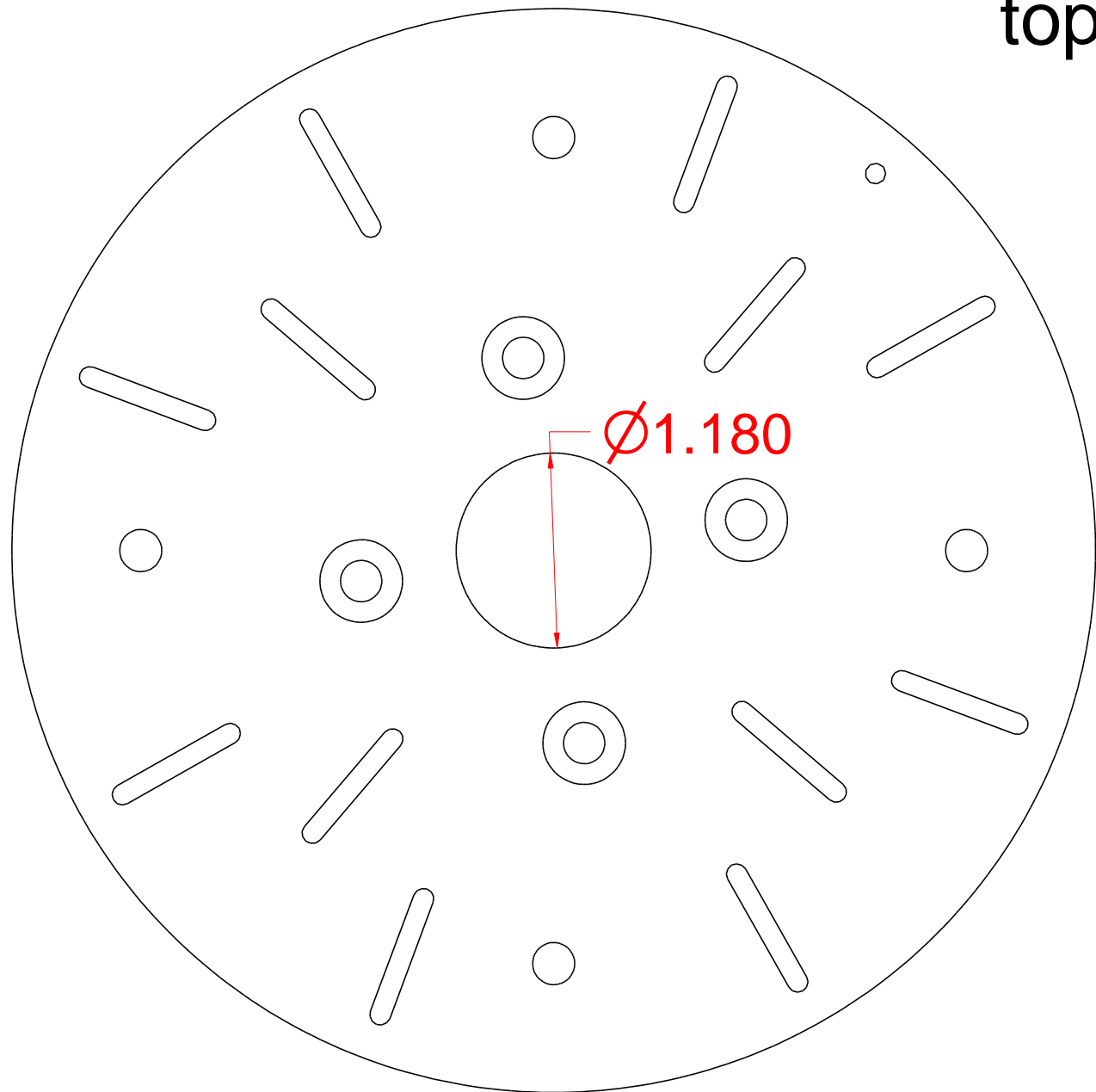
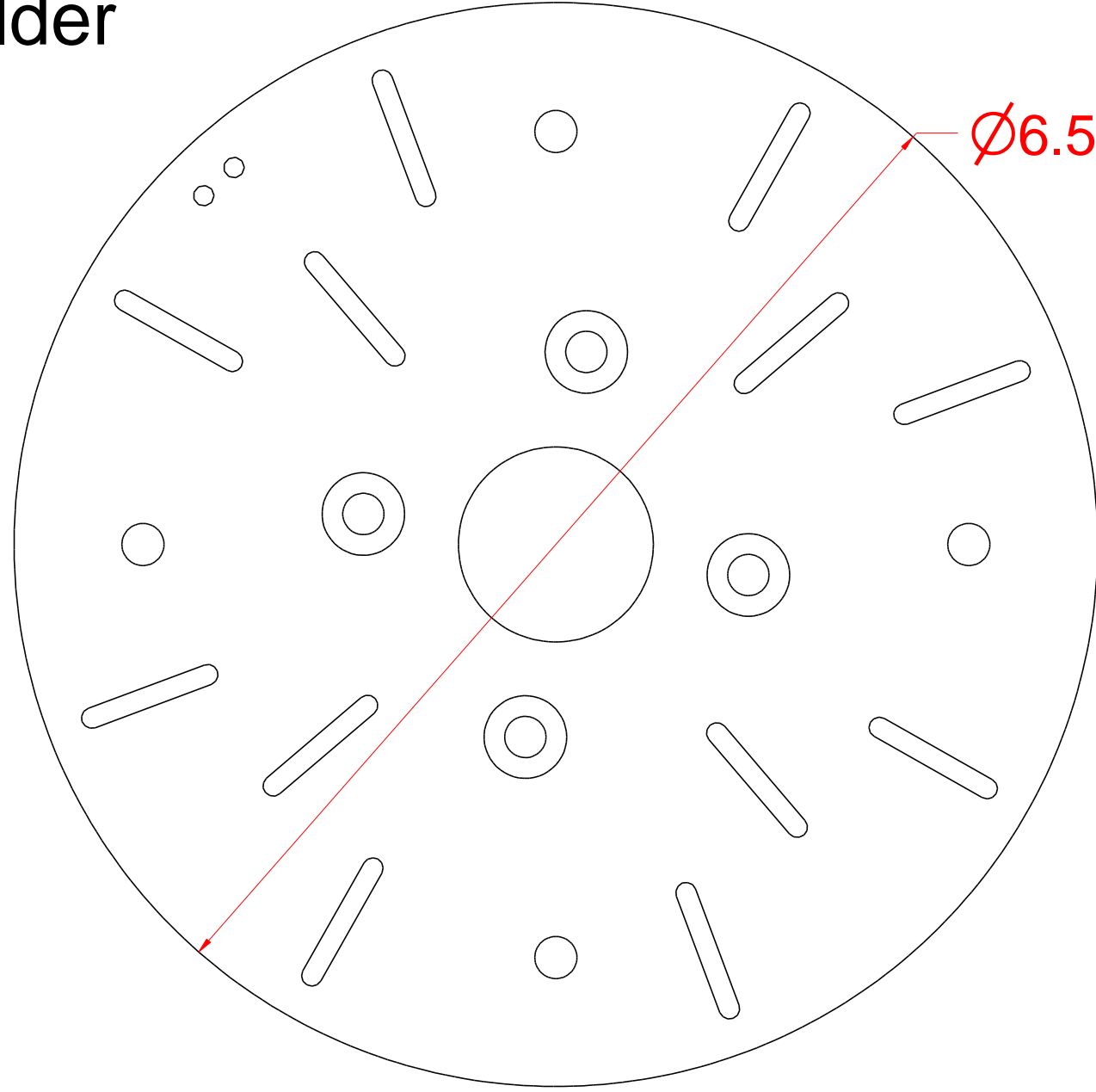


These holes mark
top of shoulder

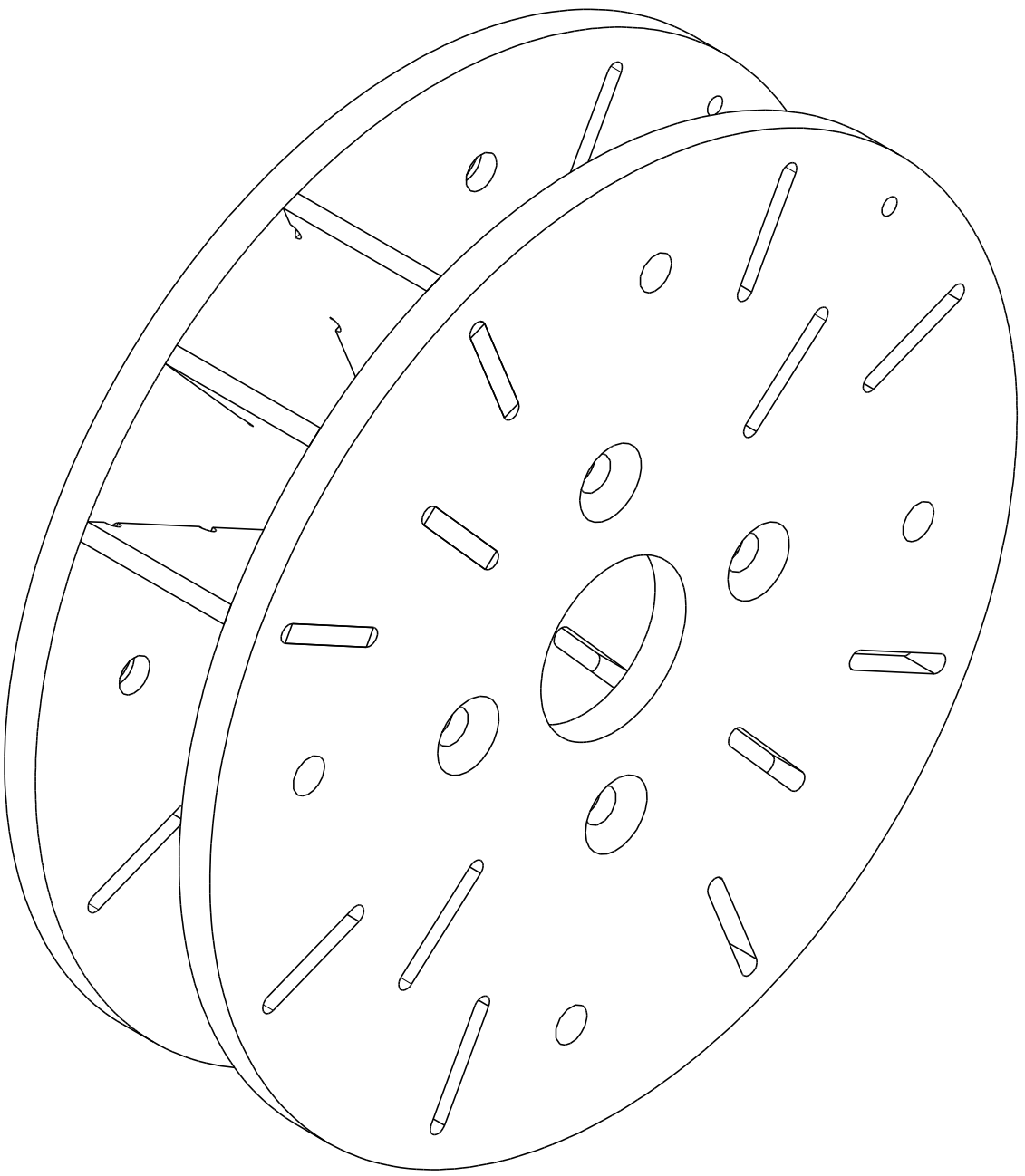


Shoulder Hub Right Inner

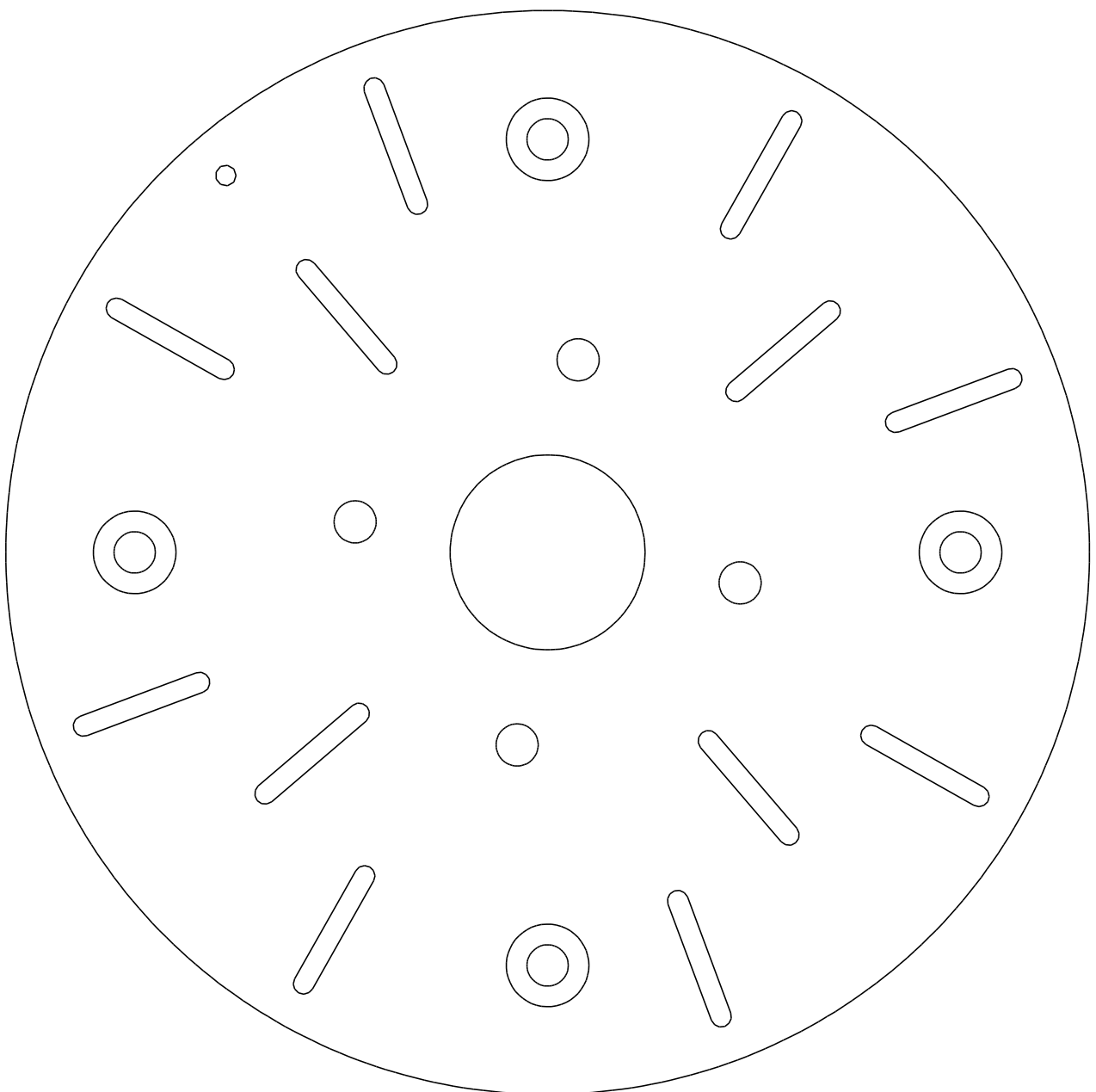


Shoulder Hub Left Inner

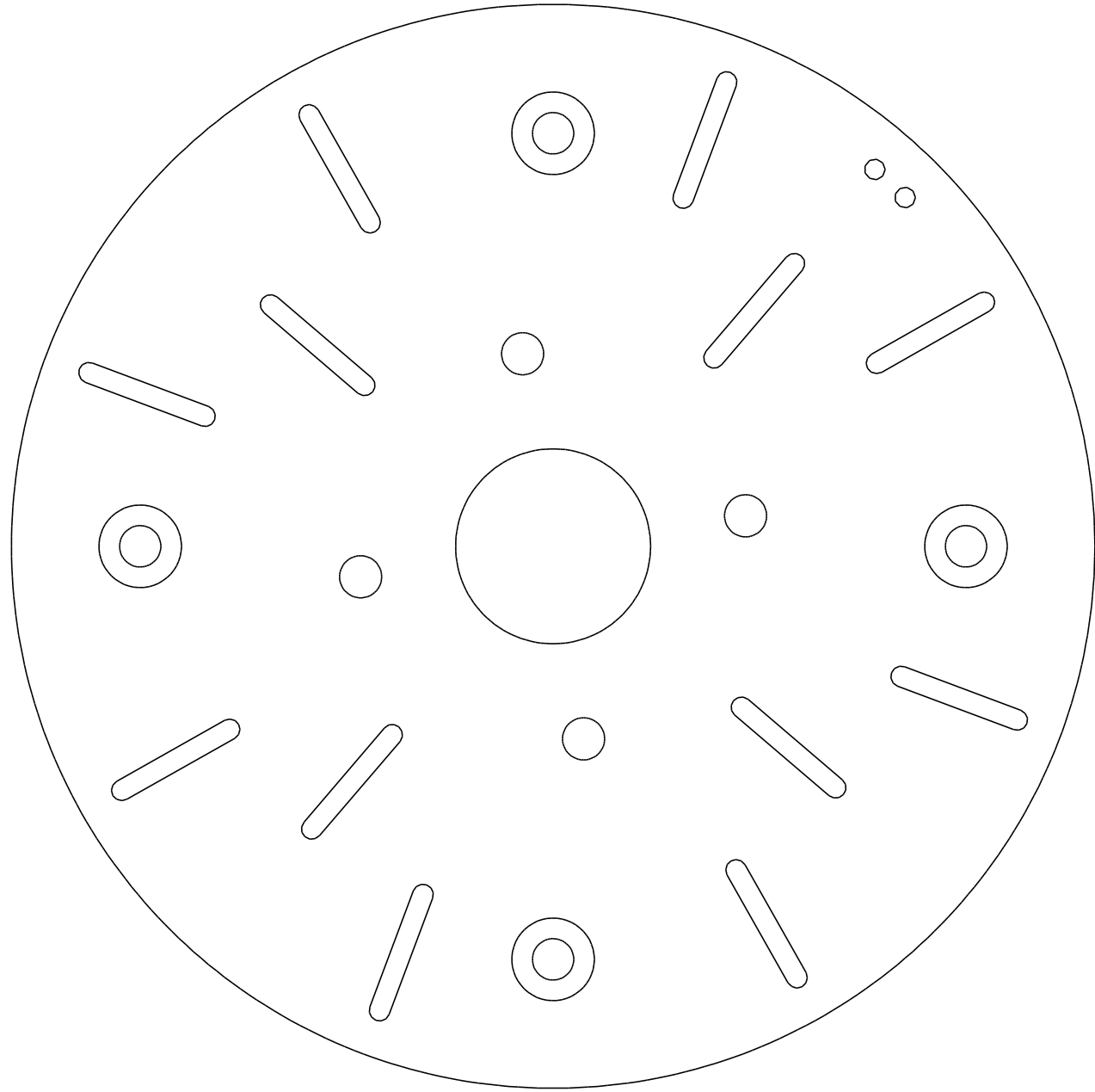
Fixed 3-leg Shoulder



This design is similar to Dave Everett's
except that it uses the eggcrate design.
With Countersunk holes pre-cut
be Careful not to mix left/right parts.

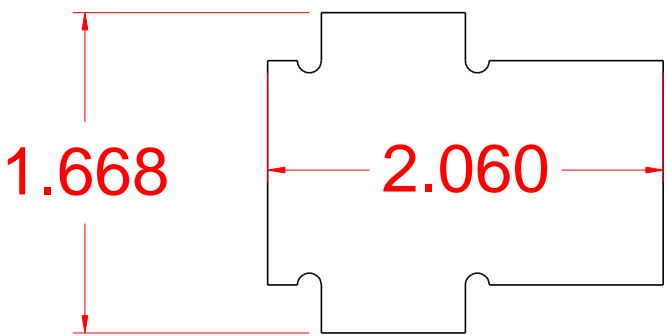


Shoulder Hub Right Outer



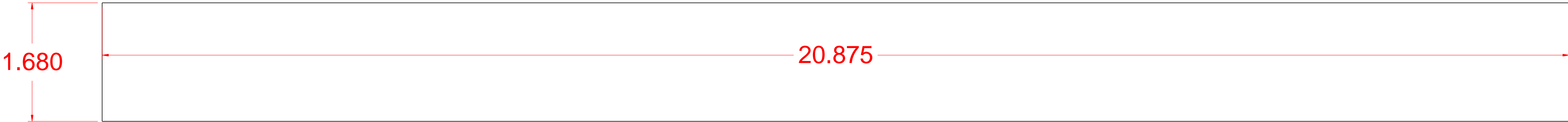
Shoulder Hub Left Outer

Shoulder Hubs
All .25 thick
Note Countersinks as shown
Center Hole is 1.18 in (30mm)
Bolt Holes are .25 in.
Adjust to match bolts you use



Shoulder Riser
make 24 - .125 thick

Shoulder Edge - make 2 - .040 thick



Copyright Media-Conversions - Released for non-commercial use ONLY!

DRAWN	DATE	<div>MediaConversions</div>			
CHECKED	12/07/2011				
QA					
MFG					
APPROVED					
SIZE	C	FSCM NO.	DWG NO.	REV	
SCALE			3-leg fixed shoulder		
					SHEET