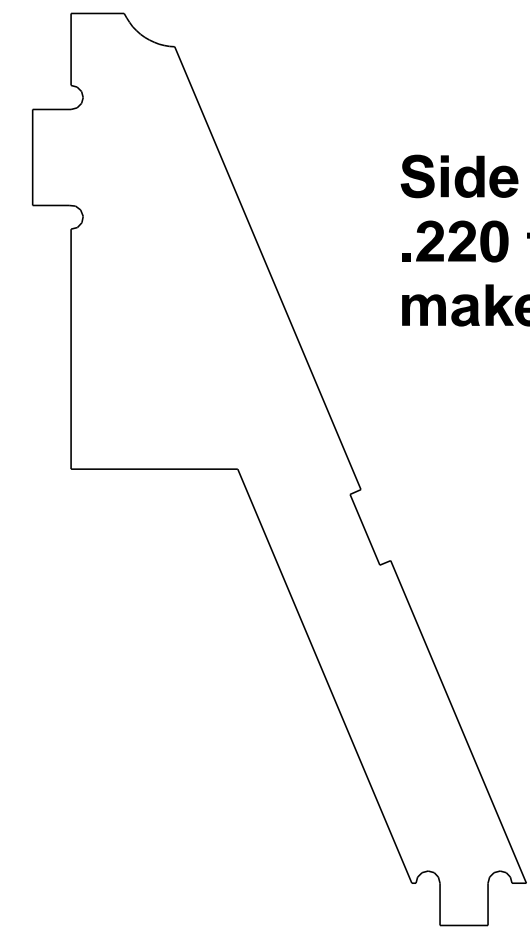
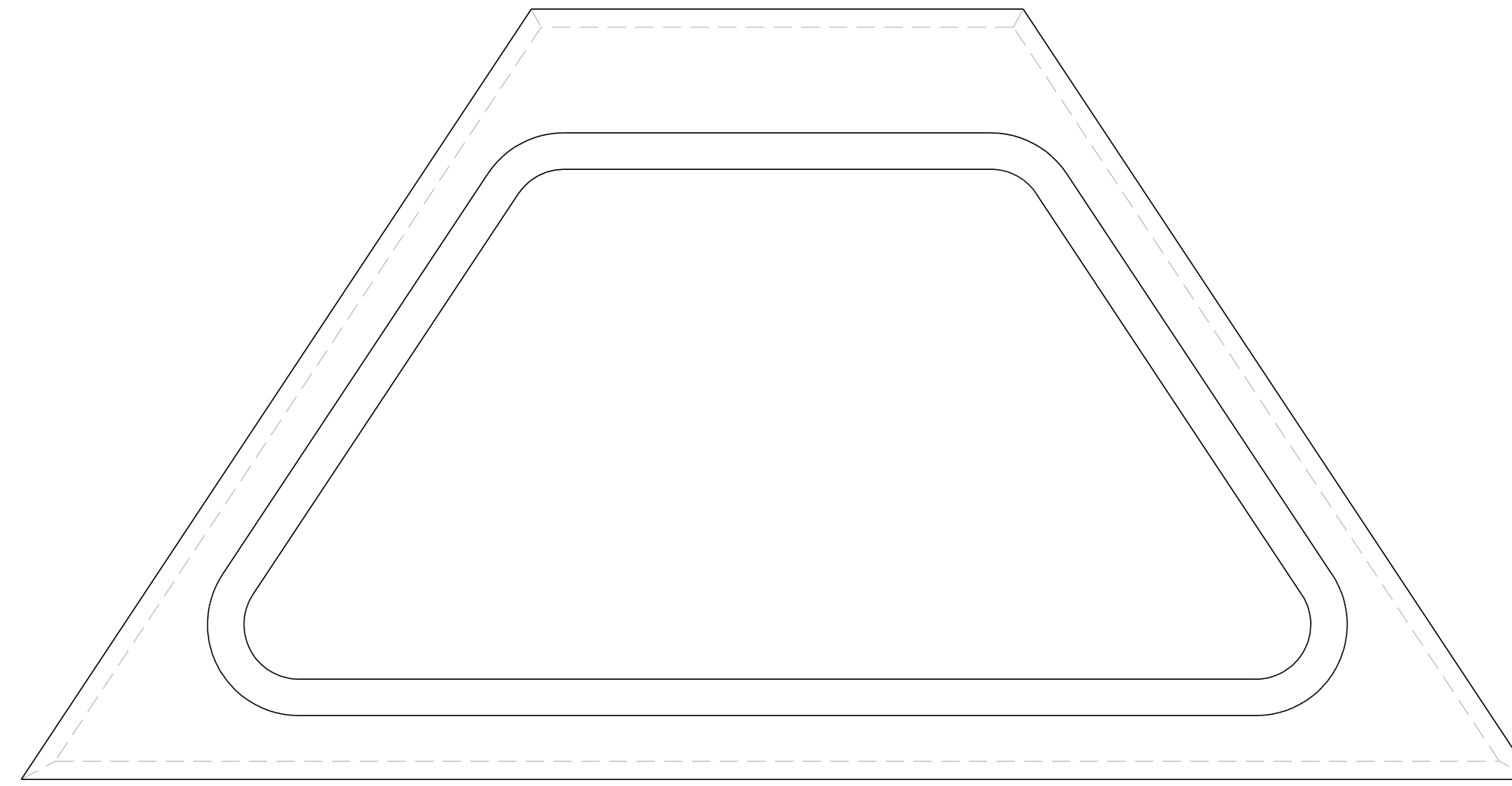


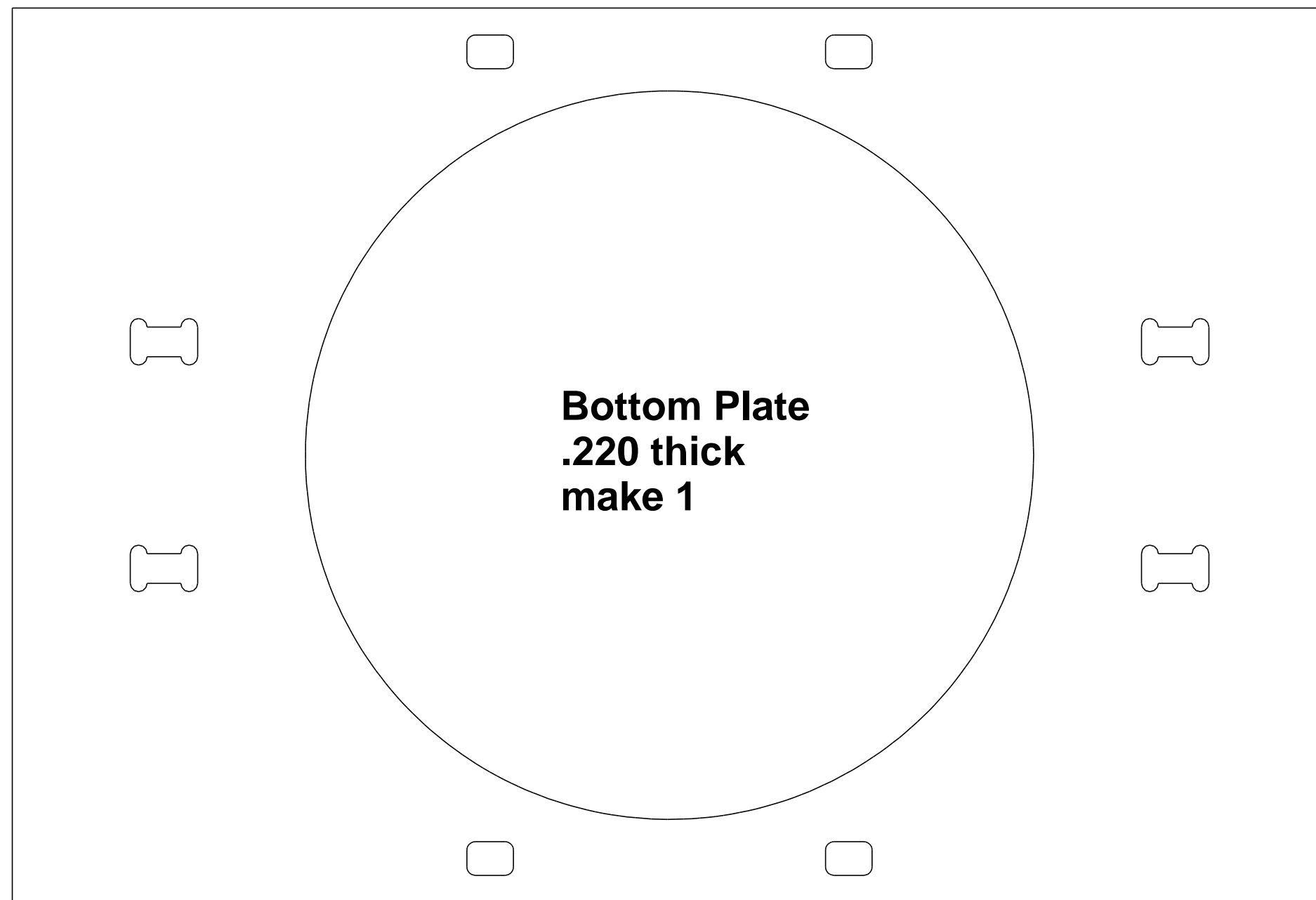
Main Plate
.220 thick
make 2



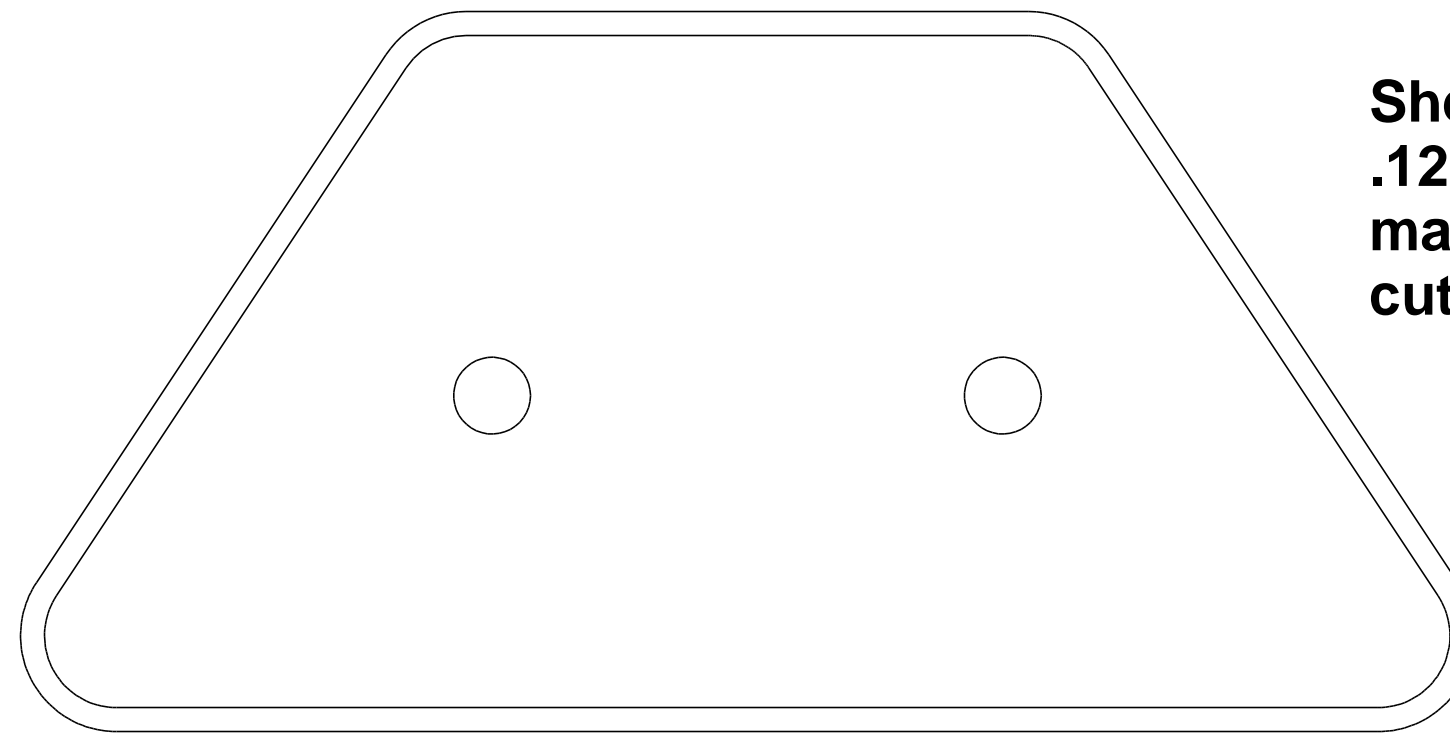
Side Plate
.220 thick
make 4



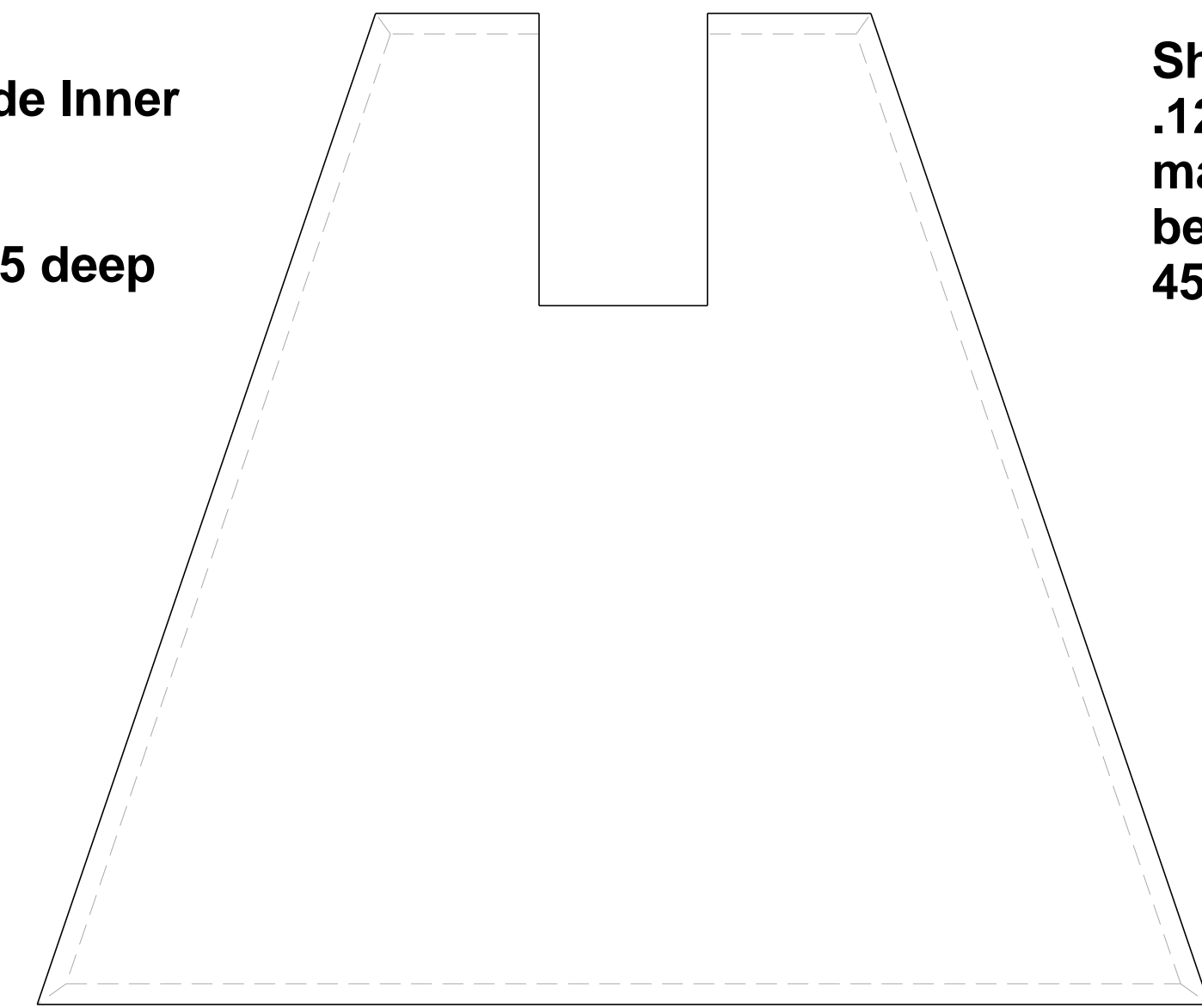
Shell - Long Side Outer
.125 thick
make 2
cut recess .0625 deep
bevel edges marked
45 degrees



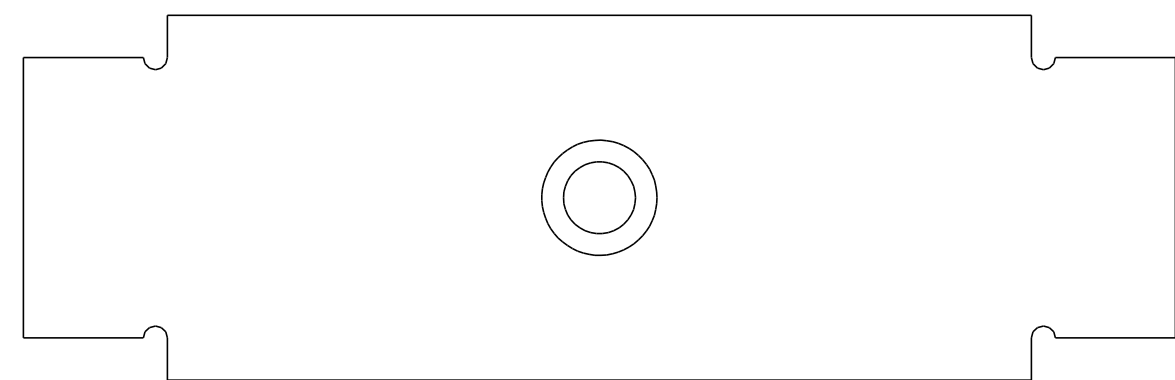
Bottom Plate
.220 thick
make 1



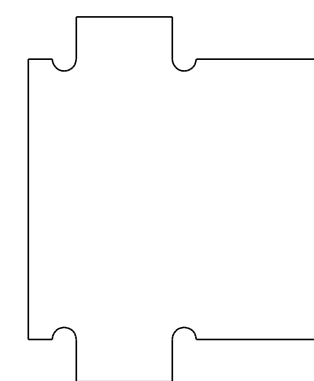
Shell - Long Side Inner
.125 thick
make 2
cut recess .0625 deep



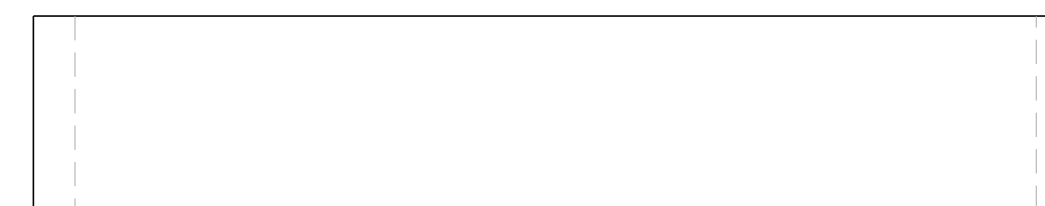
Shell - Short Side
.125 thick
make 2
bevel edges marked
45 degrees



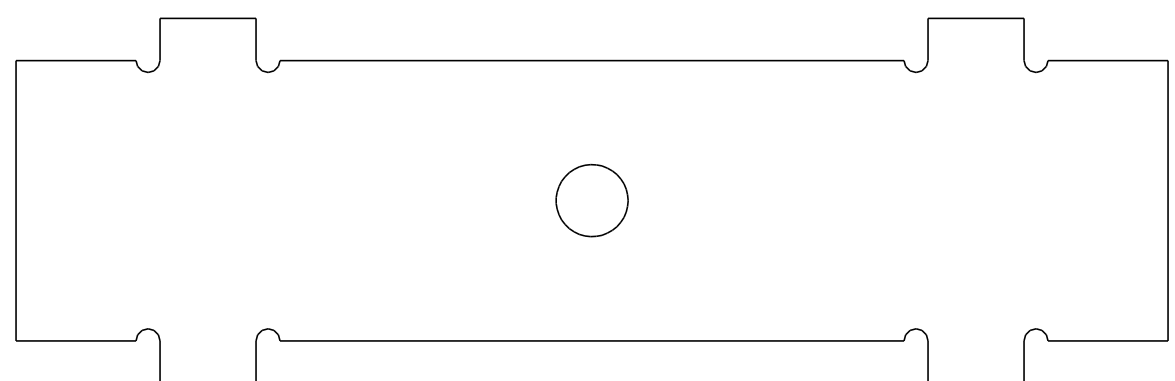
Bottom Cross Lower
.220 thick
make 1



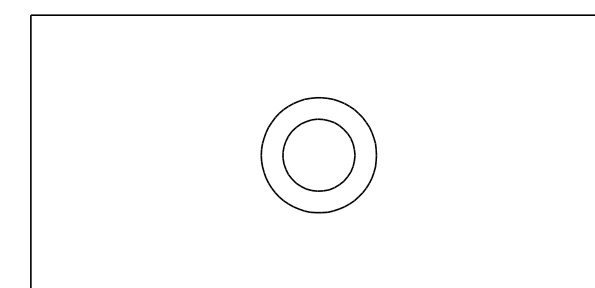
Top Cross
.220 thick
make 2



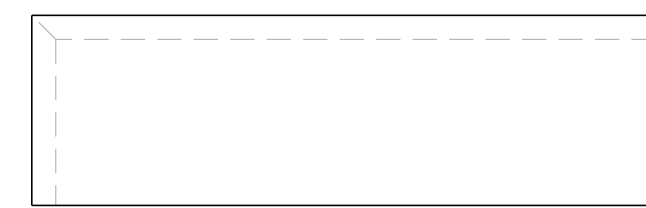
Shell - Top Strips
.125 thick
make 2
bevel edges marked
45 degrees



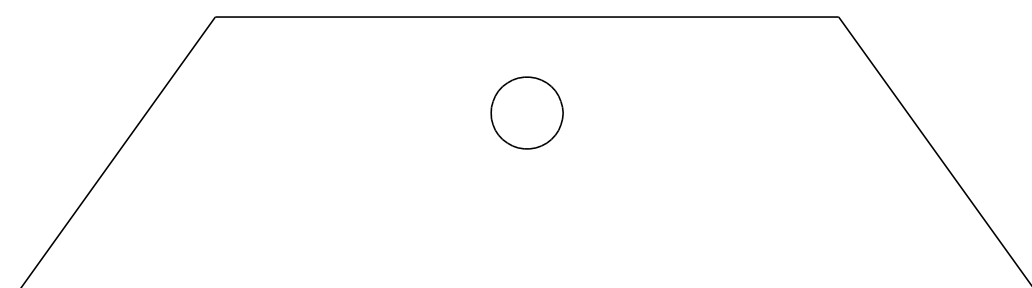
Bottom Cross Upper
.220 thick
make 1



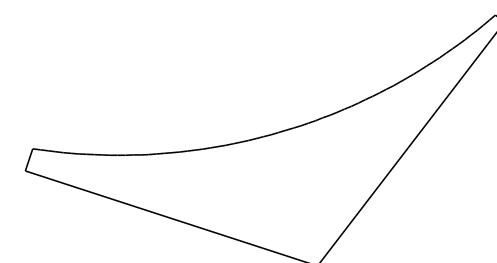
Spacer
.220 thick
Make 2
Cut Recess .05 deep



Shell - Center Strip
.125 thick
make 1
bevel edges marked
45 degrees




Partial Plate
.220 thick
make 2



Ankle Lock
.220 thick
make 2

Center Foot

Copyright Media-Conversions - Released for non-commercial use ONLY!

DRAWN	DATE				
CHECKED					
QA		SIZE C	FSCM NO.	DWG NO.	REV
MFG		SCALE			SHEET
APPROVED					