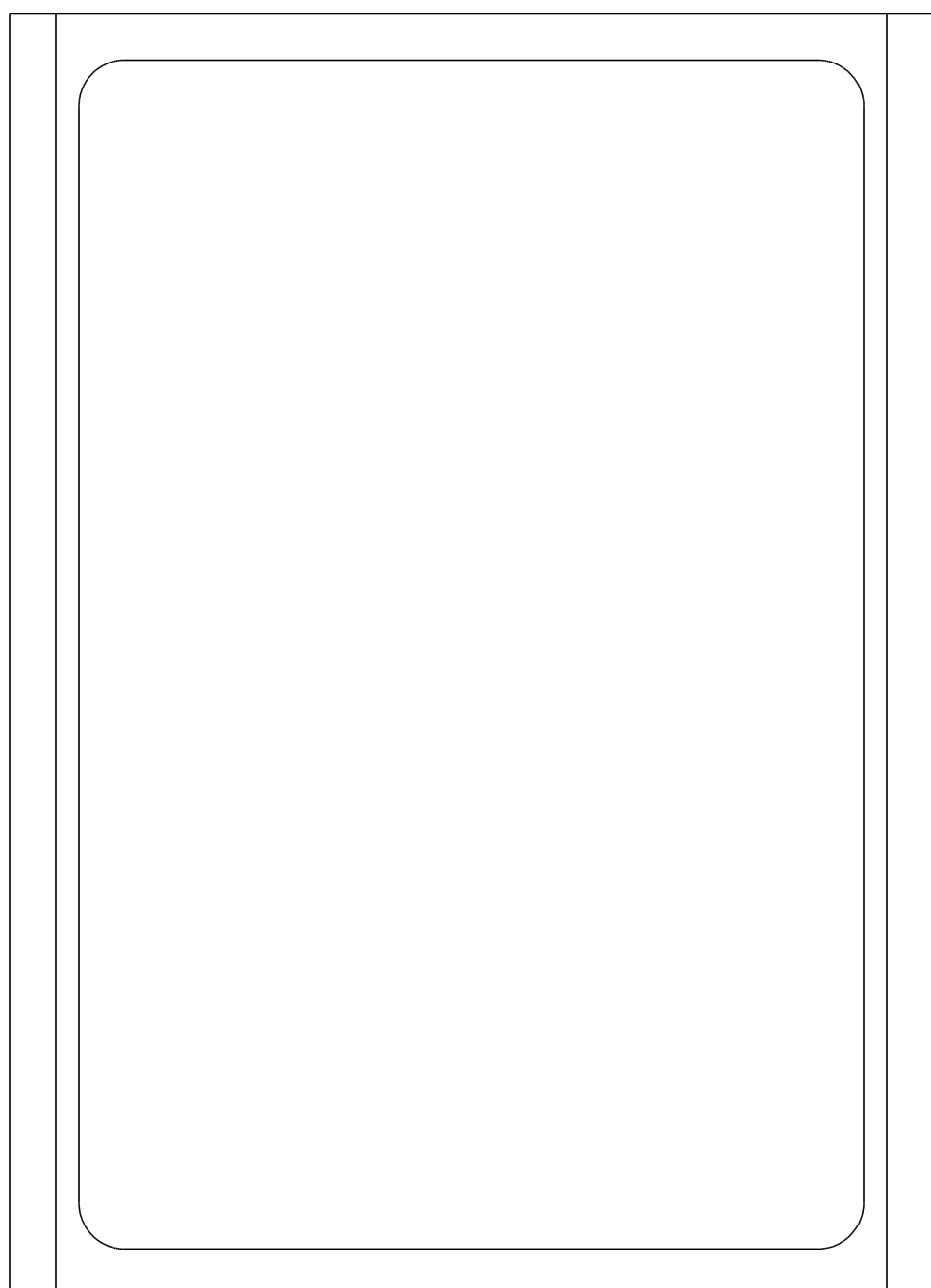
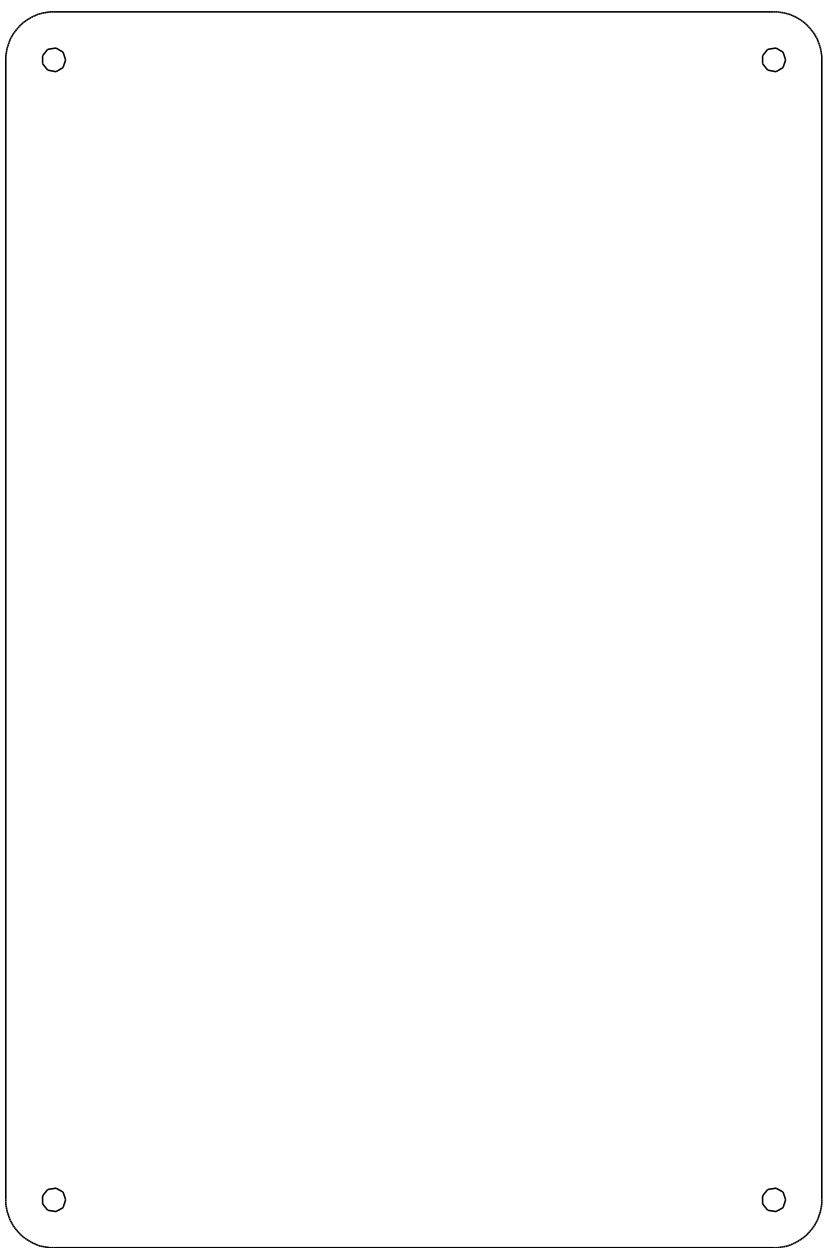


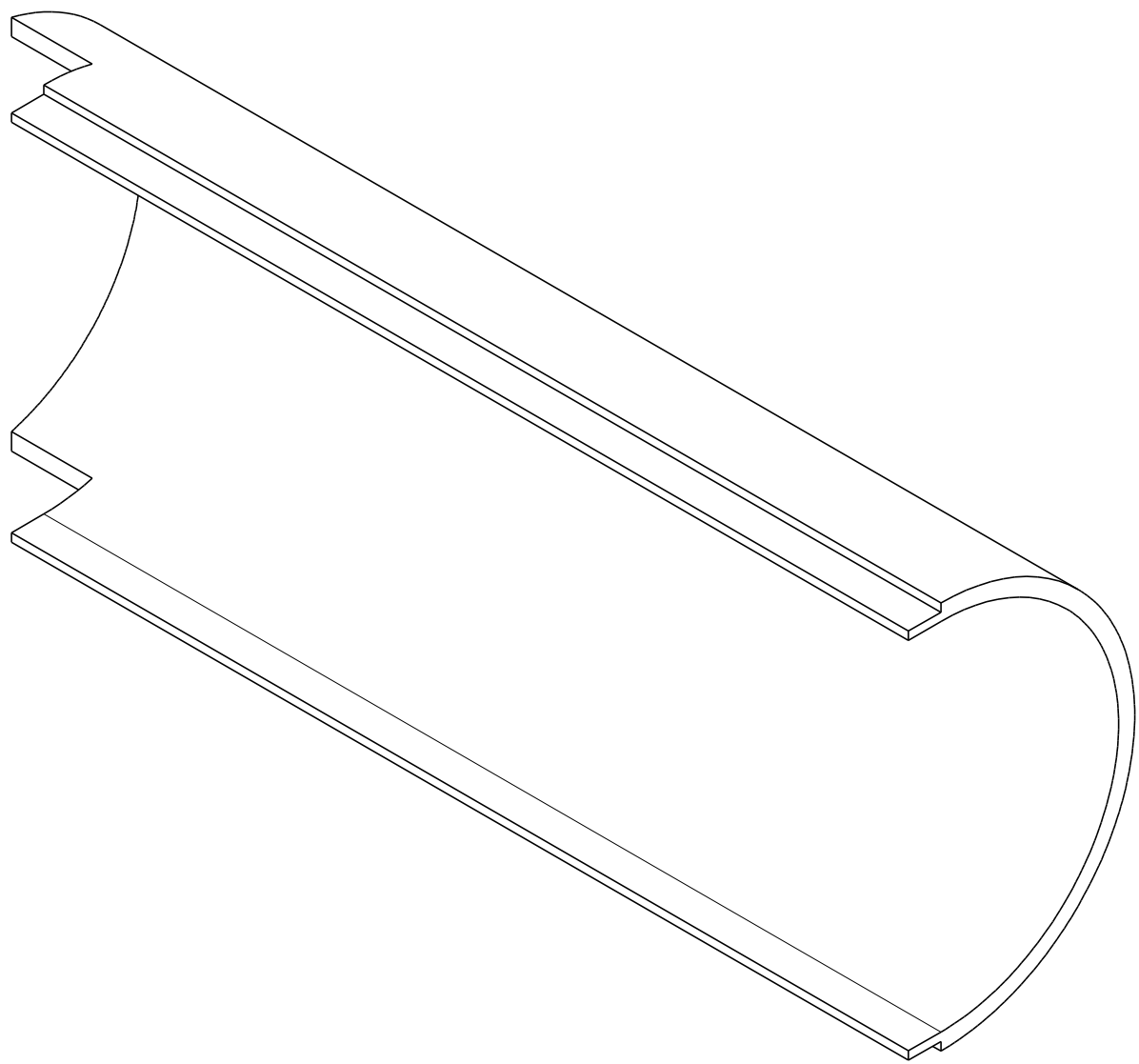
Fixed Side  
Make 1 - .125 thick  
cut edges .0625 deep



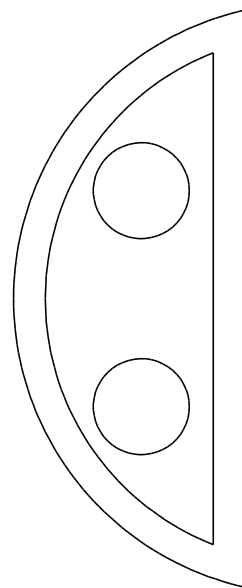
Door Frame  
Make 1 - .125 thick  
Cut edsge .0625 deep



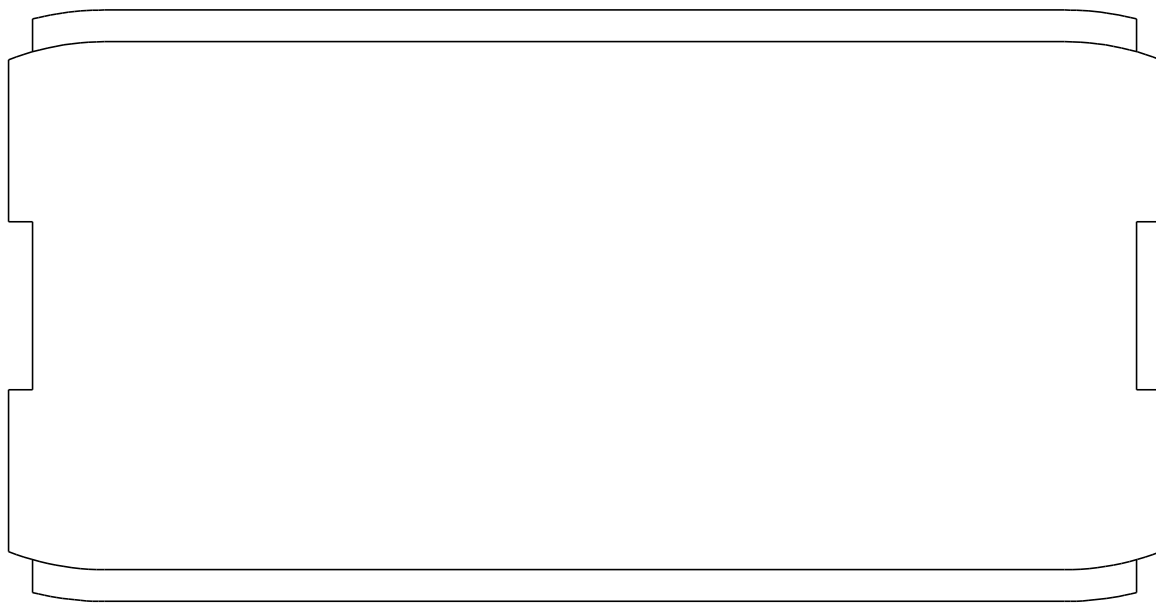
Door Panel  
Make 1 - .125 thick



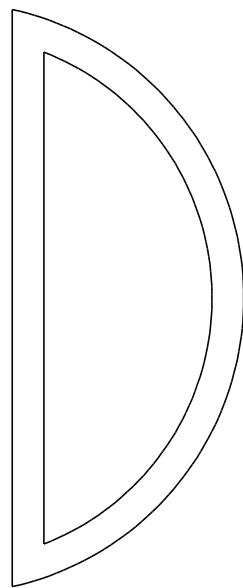
Curved End  
Make 2 - .125 thick



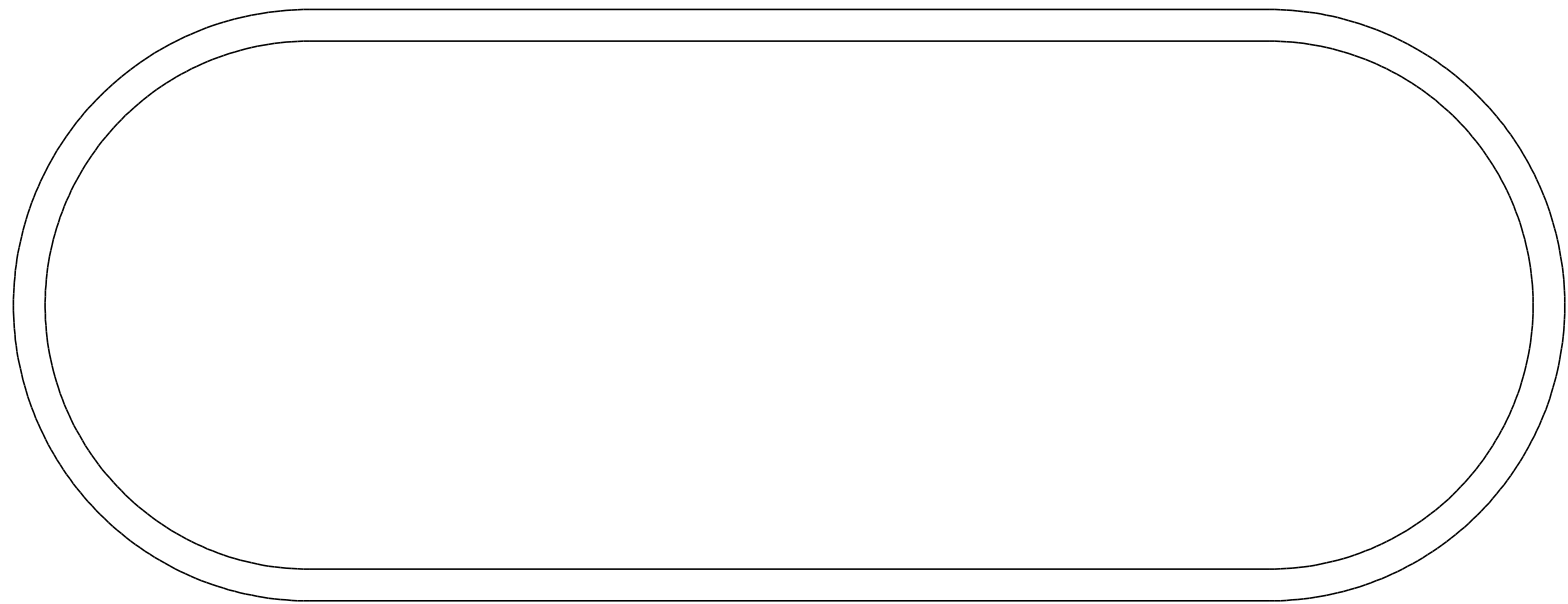
Top End w Holes  
Make 1 - .125 Thick  
Cut edges .0625



Top Panel  
Make 1 - .125 thick  
Cut edges .0625



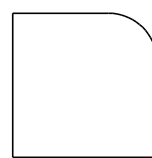
Top End w/o Holes  
Make 1 - .125 thick  
Cut Edges .0625



Bottom Panel  
Make 1 - .125 thick  
Cut edges .0625



Top Plug  
Make 2 - .125 thick



Corner Anchor  
Make 4 - .125 thick

Bent Up Battery Box

Copyright Media-Conversions - Released for non-commercial use ONLY!

DRAWN	DATE	<div>MediaConversions</div>		
CHECKED	09/12/2012			
QA				
MFG		SIZE	FSCM NO.	DWG NO.
APPROVED		C		Battery Box
		SCALE		SHEET